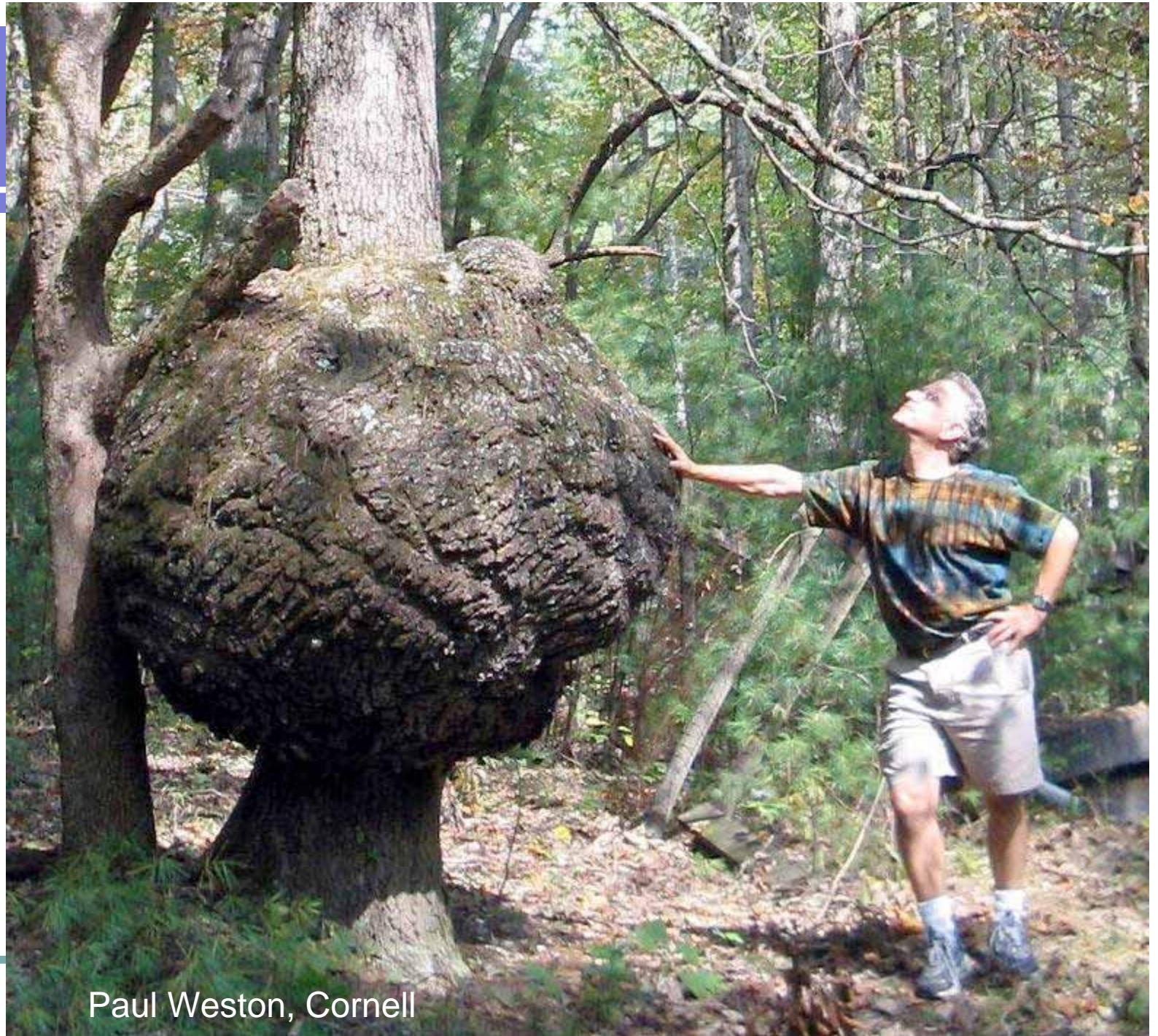


Galls



Paul Weston, Cornell

Gall Makers

- Abnormal growth on plants
- Galls restrict injury by the gall maker
- Many gall makers attacked by inquiline species who invade the galls.
- Insect Gall makers seldom if ever kill trees
 - This is not the case for some bacterial gall makers such as (crown gall), or nematode gall makers (soybean cyst nematode)

Gall Makers

- Rust mites (Eriophyid)
- Flies (Gall Midges -Ceccidomyid)
- Wasps (Cynipids, Sawflies)
- Bugs
 - Psyllids
 - Adelgids
 - Aphids
 - Phylloxeran
- Beetles (minor importance)

Maple Bladder Gall



Ash Flower Gall



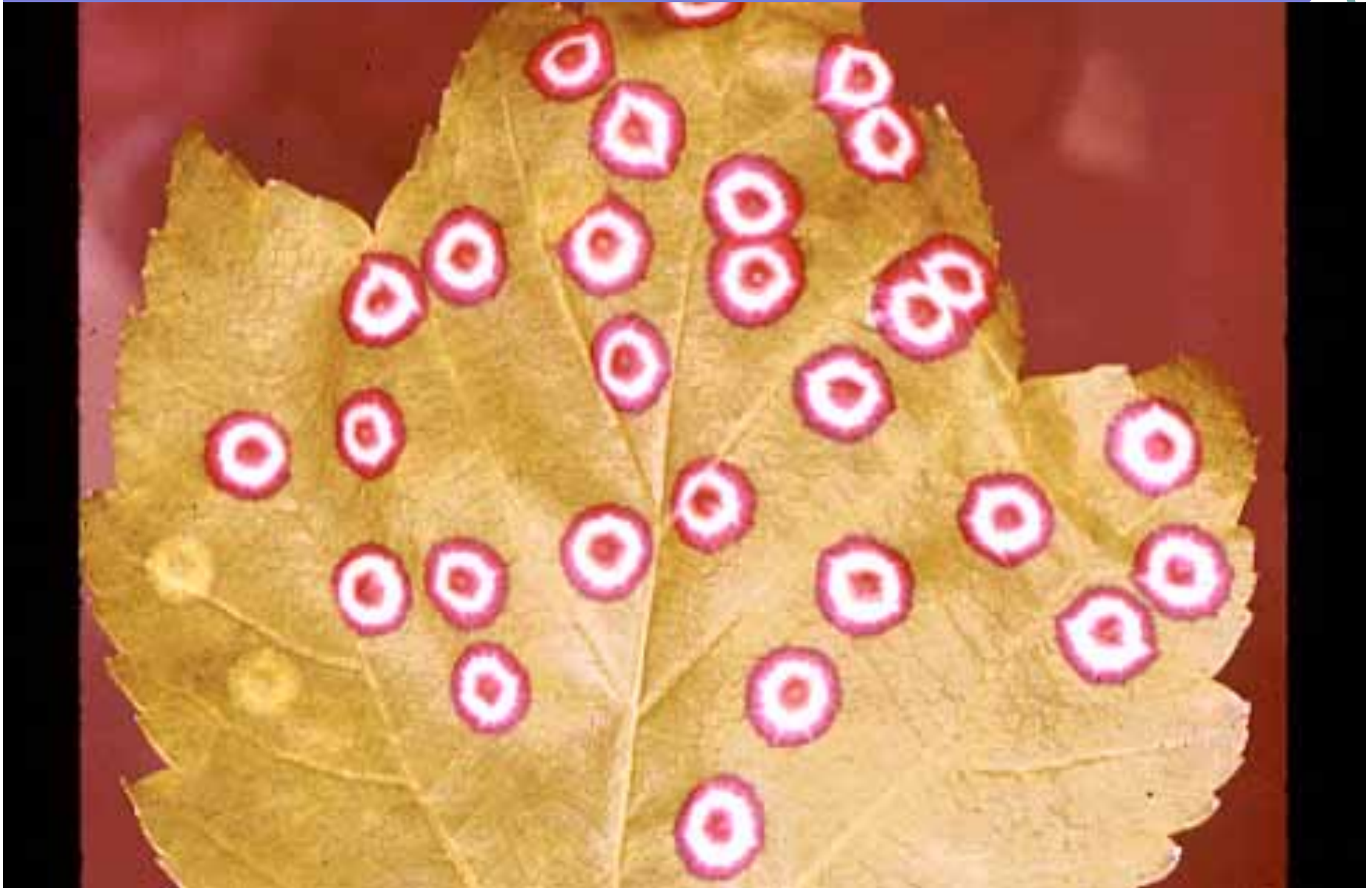
Walnut Petiole Erineum



Maple Eyespot Gall



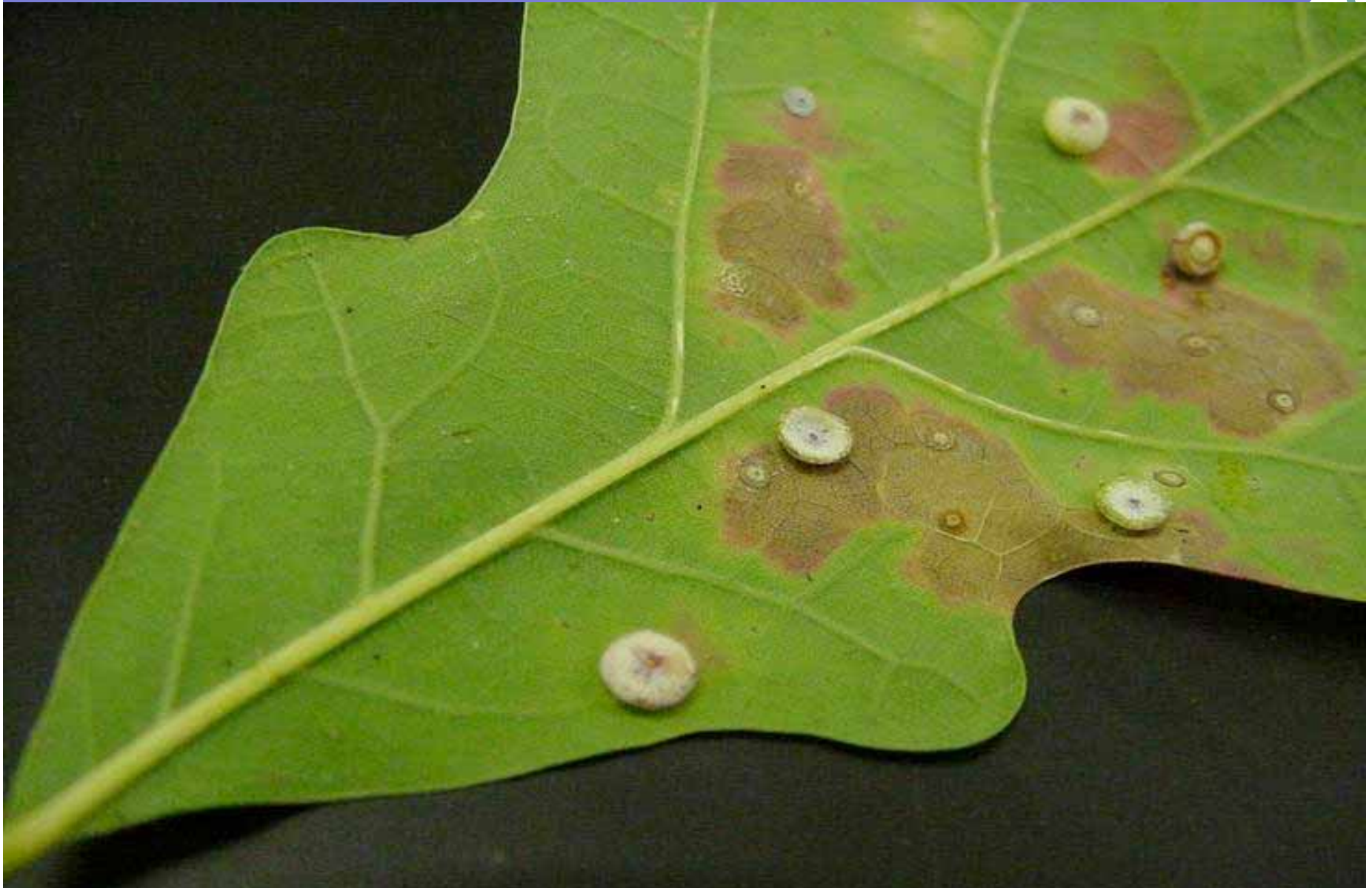
Maple Eyespot Gall



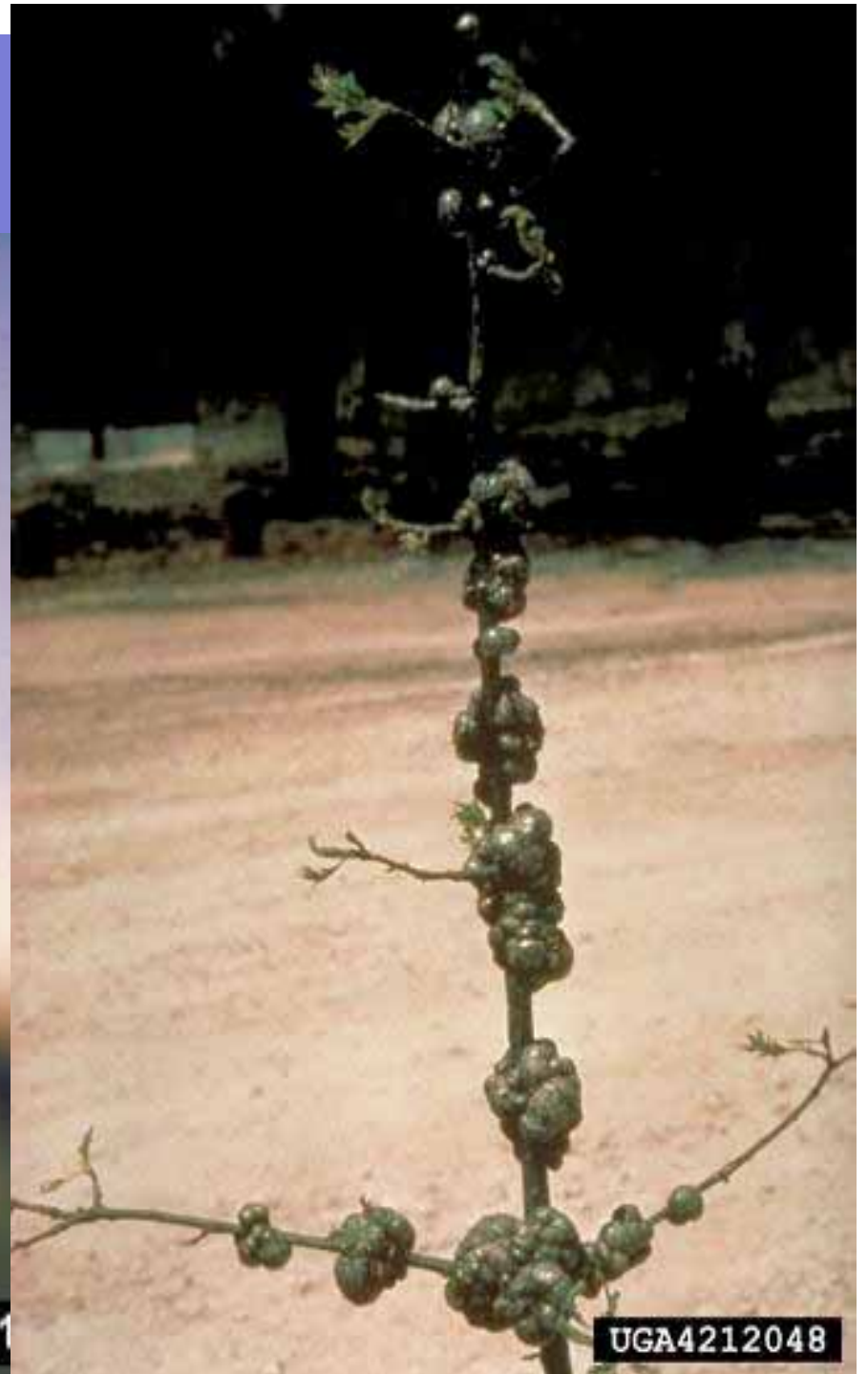
Vein Pocket Gall



Oak Spangle Gall



Horned Oak Gall



Hedgehog Gall of Oak



Wool Sower Gall



Jumping Oak Gall

<http://waynesword.palomar.edu/pldec97.htm>



Leaf top



Leaf bottom

Cooley Spruce Gall Adelgid Life Cycle

COOLEY SPRUCE GALL ADELGID



Distortion by Cooley Spruce Gall Adelgid on Douglas Fir (May)



Cooley Spruce Gall Adelgid in June



Cooley Spruce Gall in July



Cooley Spruce Gall- Summer Adults



Eastern Spruce Gall Adelgid



Hackberry Nipple Gall

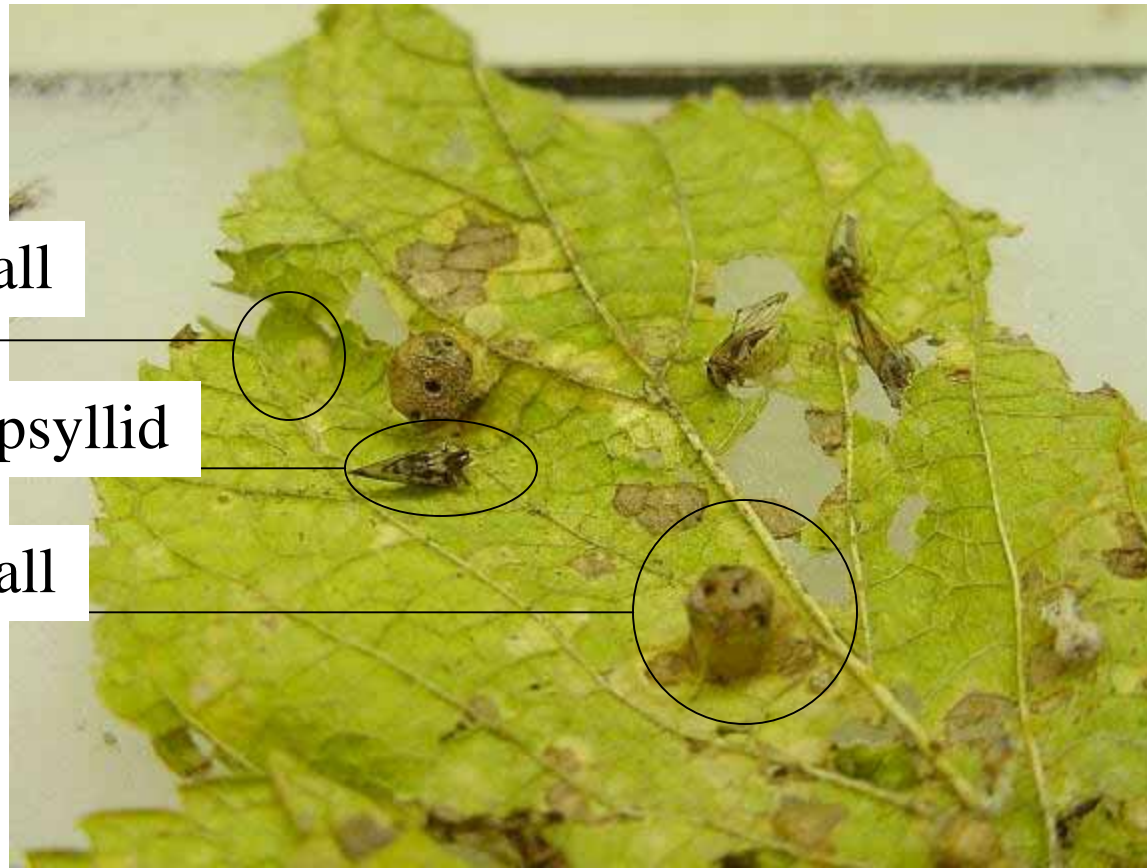


Hackberry Galls and Gall Makers

Blister Gall

Hackberry psyllid

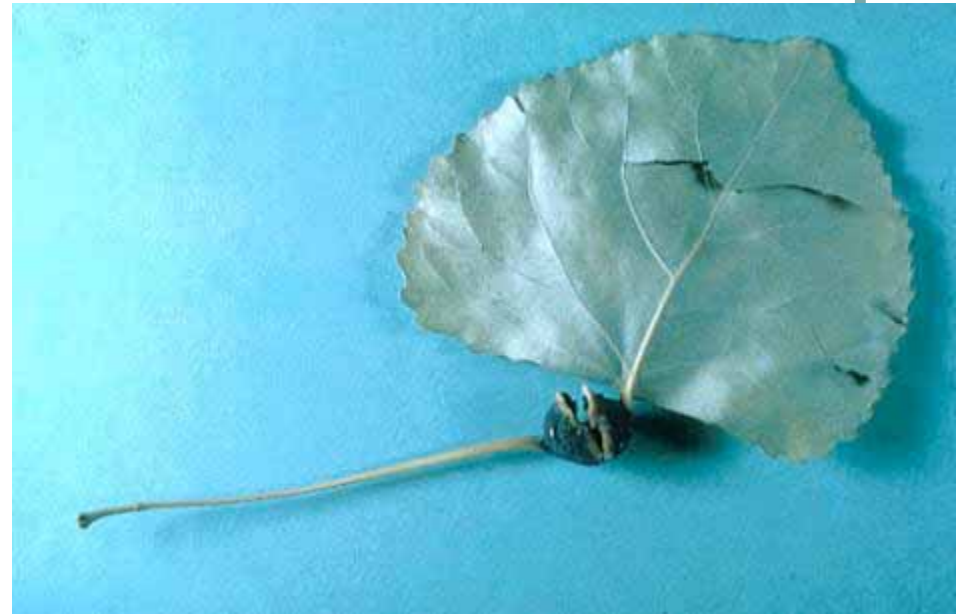
Nipple Gall



Hackberry Petiole Gall



Poplar Petiole Galls



Hackberry Witch's Broom



Poplar Saperda (Longhorned Beetle)



UGA3056054